



Greenz
BY **DANUBE**

**FULLY
FURNISHED**
TOWN HOUSES & VILLAS

DISTANCES

EMIRATES ROAD	1 MINS
DUBAI - AL AIN ROAD	2 MINS
SHEIKH ZAYED BIN HAMDAN AL NAHYAN ST	3 MINS
SHEIKH MOHAMMED BIN ZAYED ROAD	5 MINS
METRO - BLUE LINE	5 MINS
SILICON CENTRAL MALL	10 MINS
DUBAI SAFARI PARK	11 MINS
IMG WORLD	13 MINS
GLOBAL VILLAGE	15 MINS
DUBAI CREEK HARBOUR	15 MINS
DXB AIRPORT	17 MINS
DOWNTOWN DUBAI / BURJ KHALIFA	18 MINS

The World Islands

Palm Jumeirah



Meydan

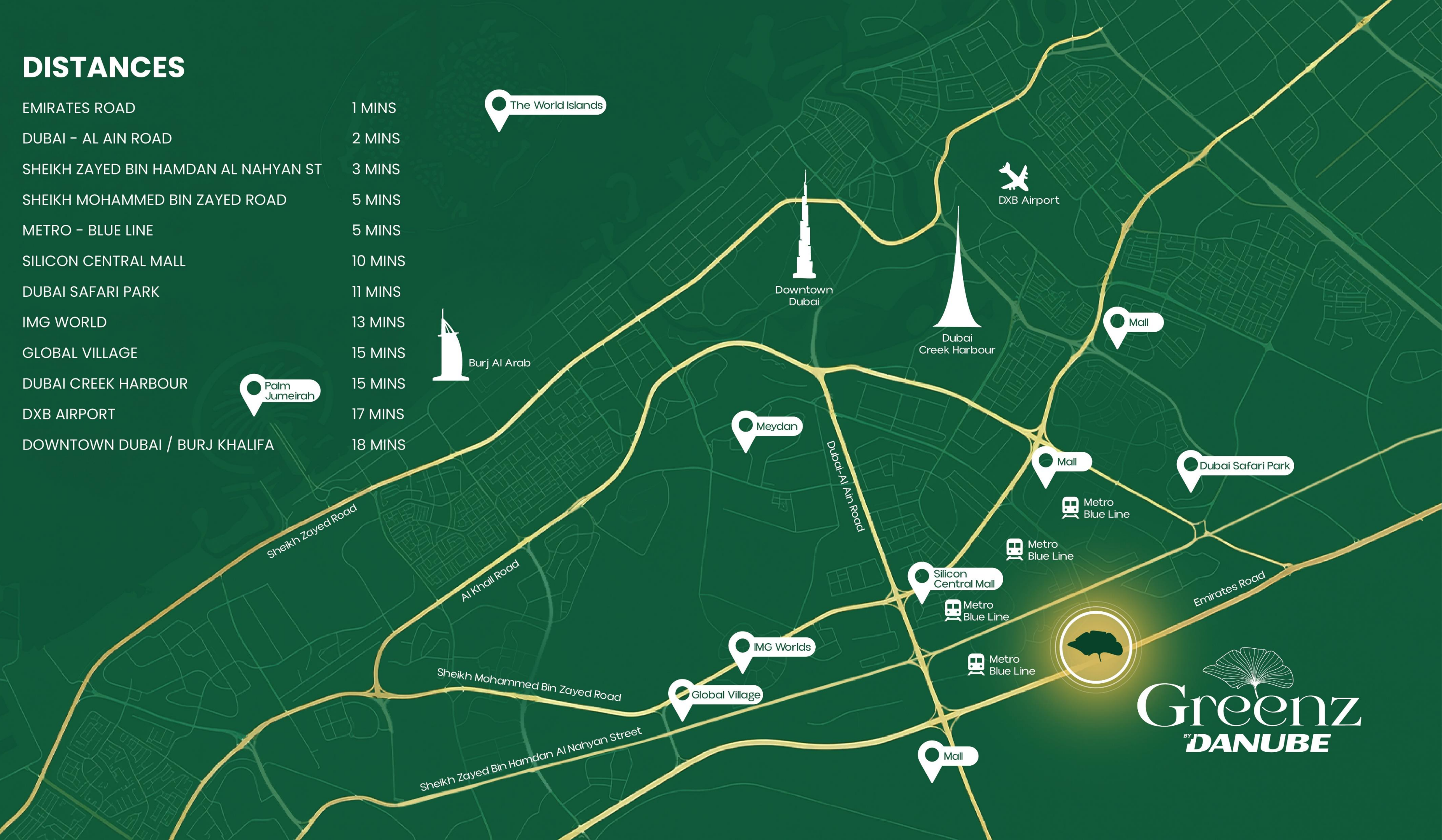
Silicon Central Mall

IMG Worlds

Global Village



Greenz
BY **DANUBE**



DUBAI COMMITS AED 12.8B

To Build A 6,500-Company Tech Hub In Silicon Oasis



COMPLETE LIFESTYLE ECOSYSTEM

- 27 International Universities and Over 15 Schools
- 35+ clinics & 4 major hospitals
- 18+ mosques
- 120+ restaurants
- 6+ major retail centres



GOVERNMENT BACKED GROWTH

- District 10 initiative launched by HH Sheikh Mohammed bin Rashid Al Maktoum
- AED 12.8 billion expansion plan
- 6,500 global companies targeted - AI, Web3, Robotics, Quantum Computing
- Expected to attract thousands of companies with 70,000+ new jobs to be created



ESTABLISHED THRIVING ECOSYSTEM

- 100,000+ residents, entrepreneurs & professionals
- Active, self-sustained community



UPCOMING BLUE LINE METRO




Greenz
BY **DANUBE**

HANDOVER
Q4 2029

TWIN VILLA





TOWNHOUSE





AN UNMATCHED LIFESTYLE, *Masterplanned*

400,000 SQ. FT. OF
LIFESTYLE & AMENITIES



Presenting **THE DANCING
FOUNTAIN**

A musical fountain at the centre of it all
that brings the community alive



THE GREENZ SANCTUARY

Your Private Green Haven
of calm and fresh air



THE BEACH HUB

A curated beachside experience within the community to unwind and enjoy



THE FAMILY HUB

Landscape park, outdoor seating and beautiful cabanas for families to relax



THE SPORTS HUB

10 dedicated courts for the ultimate sporting experience!



THE WELLNESS HUB

The ideal destination for
body and mind

20,000 sq. ft.
of indoor, outdoor gym
& wellness



DOUBLE-HEIGHT
**PANORAMIC
GYM**

Train in light, space
and sweeping views.



DESIGNED FOR DEEP RECOVERY & WELLNESS

Spa Rooms, Sauna, Salt Therapy,
And Cryotherapy.





THE LOOP

A seamless **3.75km** jogging track that envelops the master community

THE KIDS DAY CARE



A MASJID WITHIN THE COMMUNITY



SHOP. DINE. CONNECT.

20,000 sq. ft. of everyday
retail within reach



A COMPLIMENTARY



BUGGY SERVICE

IS PROVIDED FOR THE CONVENIENCE
OF THE RESIDENTS



SHUTTLE SERVICE

TO THE NEAREST METRO







**Greenz**
BY **DANUBE**

**WHERE
NATURE MEETS**
the city



FULLY FURNISHED WITH PREMIUM ITALIAN DOLCE VITA FURNISHING

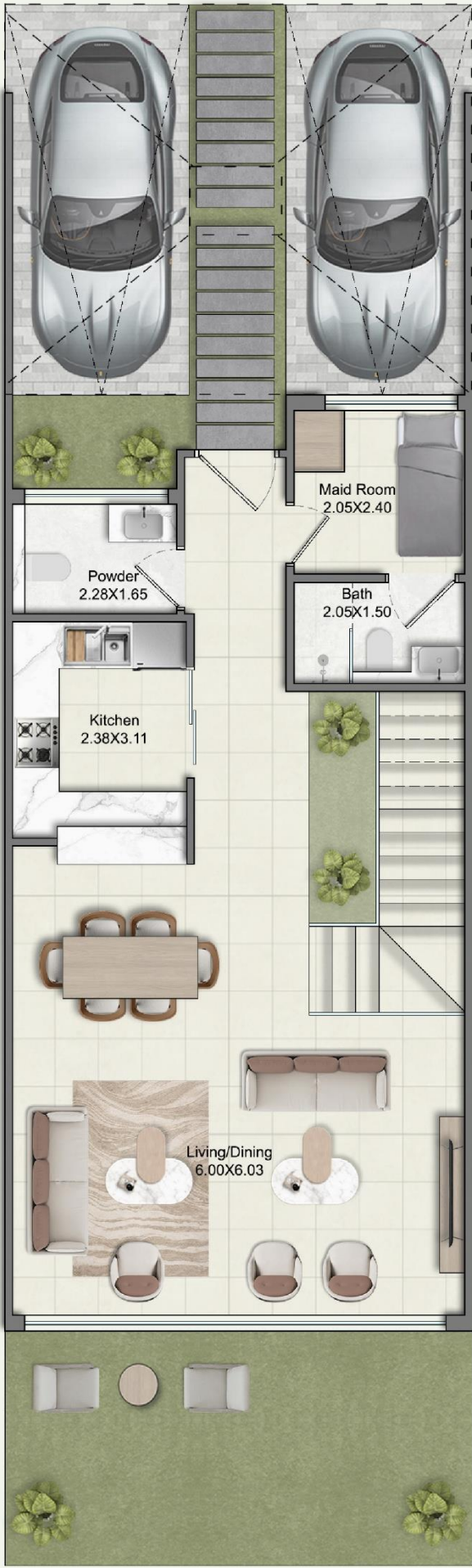
Type	Floors	Private Elevator	Starting Price (AED)	Max Price (AED)	AvgPrice (AED)	Townhouse Area R.Off (Sq.Ft)	Starting PSF (AED)	Plot Area (Sq.Ft)
3 BHK + Maid - Townhouse	G + 1 + Sky Garden	No	3.5 M	3.7 M	3.6 M	2,400	1,458	1,300
4 BHK + Maid - Townhouse	G + 2 + Sky Garden	Yes	4.2 M	4.4 M	4.3 M	2,750	1,527	1,300
4 BHK + Maid Townhouse - Premium	G + 2 + Sky Garden	Yes	4.4 M	4.7 M	4.55 M	3,100	1,419	1,300 to 1,500
5 BHK + Maid - Semi Detached Villa	G + 2 + Sky Garden	Yes	5 M	5.5 M	5.25 M	3,700	1,351	1,800 to 2,400
5 BHK + Maid - Semi Detached Large Plot	G + 2 + Sky Garden	Yes	5.7 M	6 M	5.85 M	3,700	1,541	2,700 to 3,000
5 BHK + Maid - Twin Villa with Double Height Living	G + 2 + Sky Garden	Yes	6.5 M	7.3 M	6.9 M	3,950	1,646	2,025 to 2,400
5 BHK + Maid - Twin Villa with Double Height Living Large Plot	G + 2 + Sky Garden	Yes	6.9 M	7.7 M	7.3 M	3,950	1,747	2,500 to 3,000

PAYMENT PLAN

10% Apr-26	10% Jun-26	1% Jul-26 to Feb-27	3% Mar-27
1% Apr-27 to Feb-28	4% Mar-28	1% Apr-28 to Feb-29	4% Mar-29
	1% Apr-29 to Dec-29	30% On Handover (Jan 2030)	

ANTICIPATED PROJECT COMPLETION DEC 2029

3BHK + MAID TOWNHOUSE



GROUND FLOOR

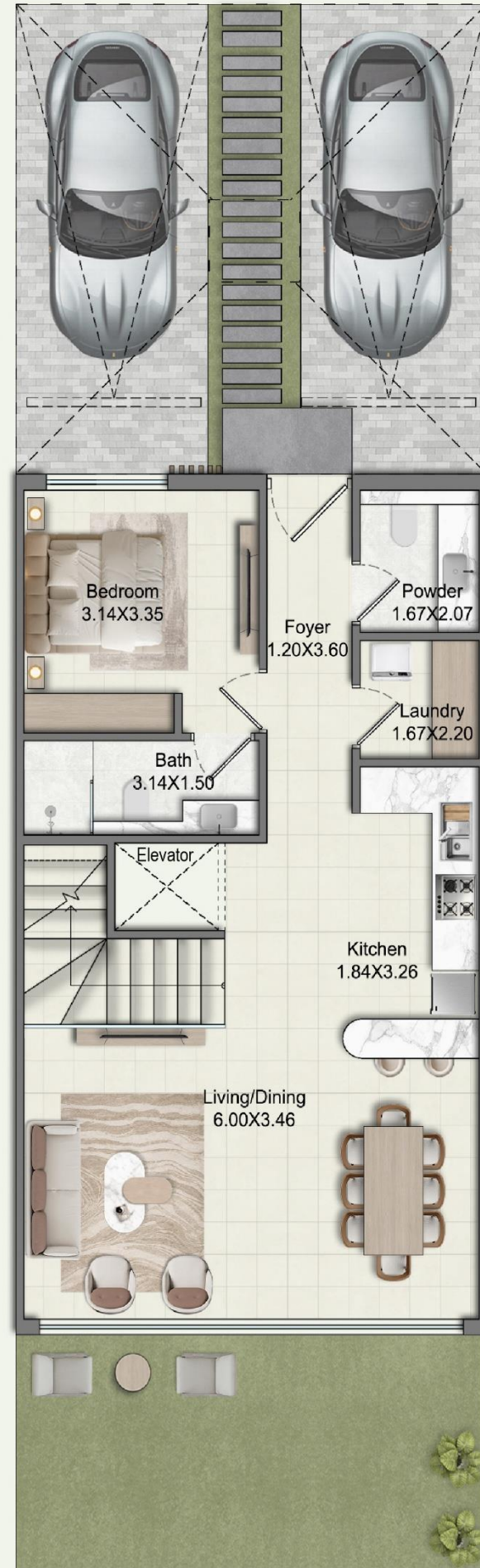


FIRST FLOOR

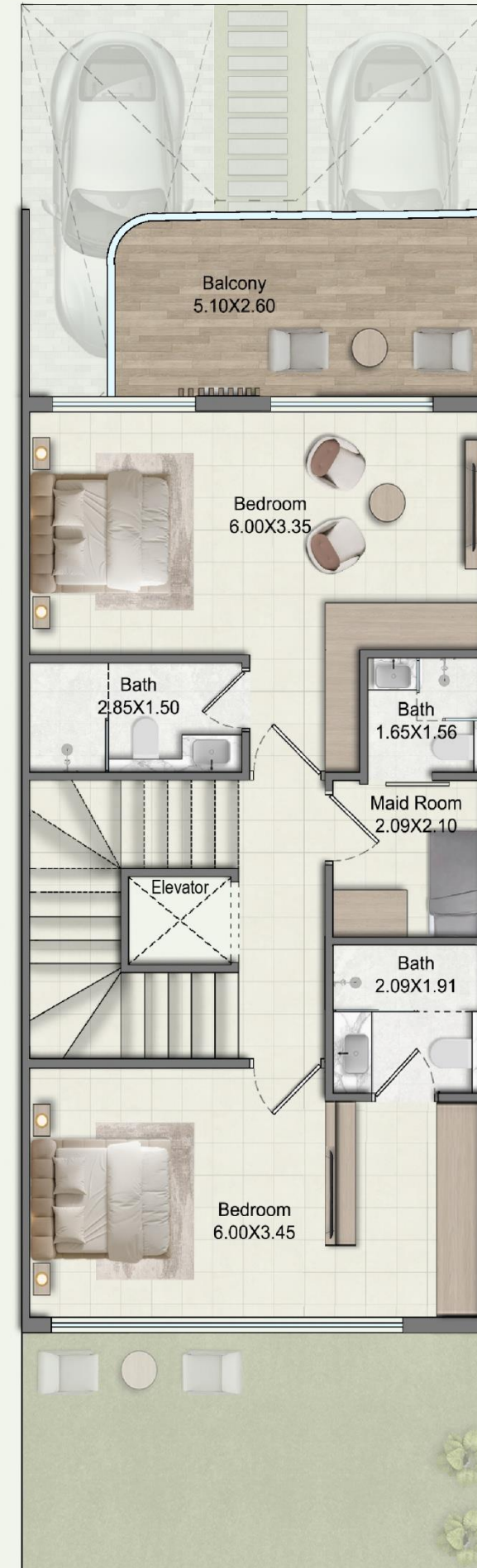


ROOF FLOOR

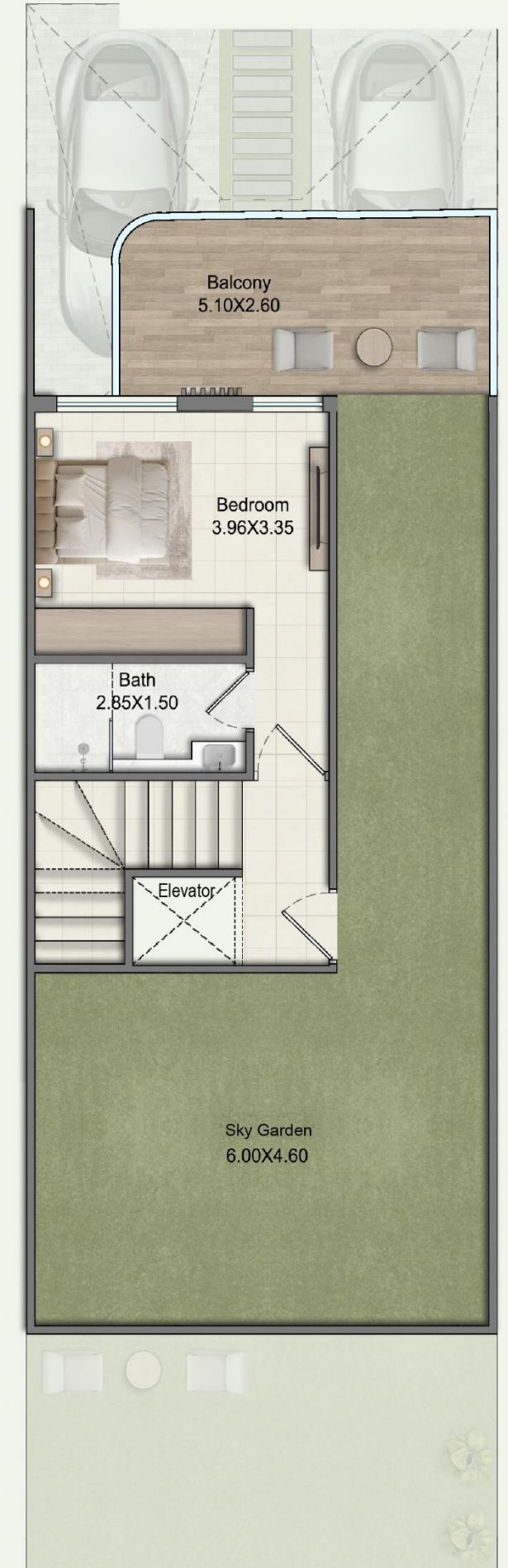
4BHK + MAID + PRIVATE ELEVATOR TOWNHOUSE



GROUND FLOOR

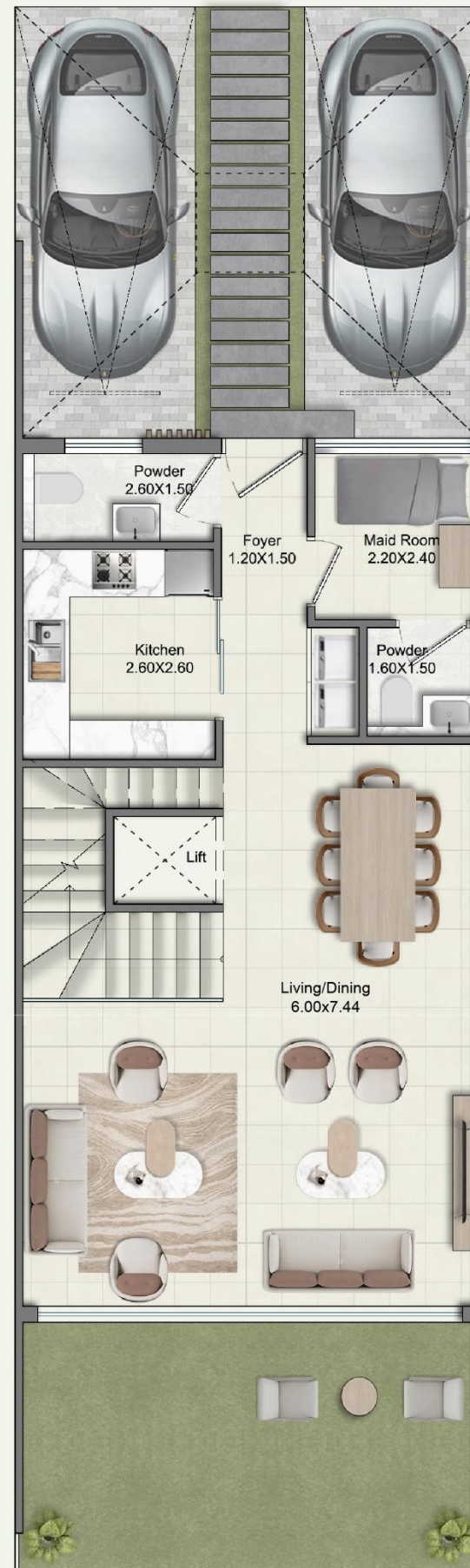


FIRST FLOOR

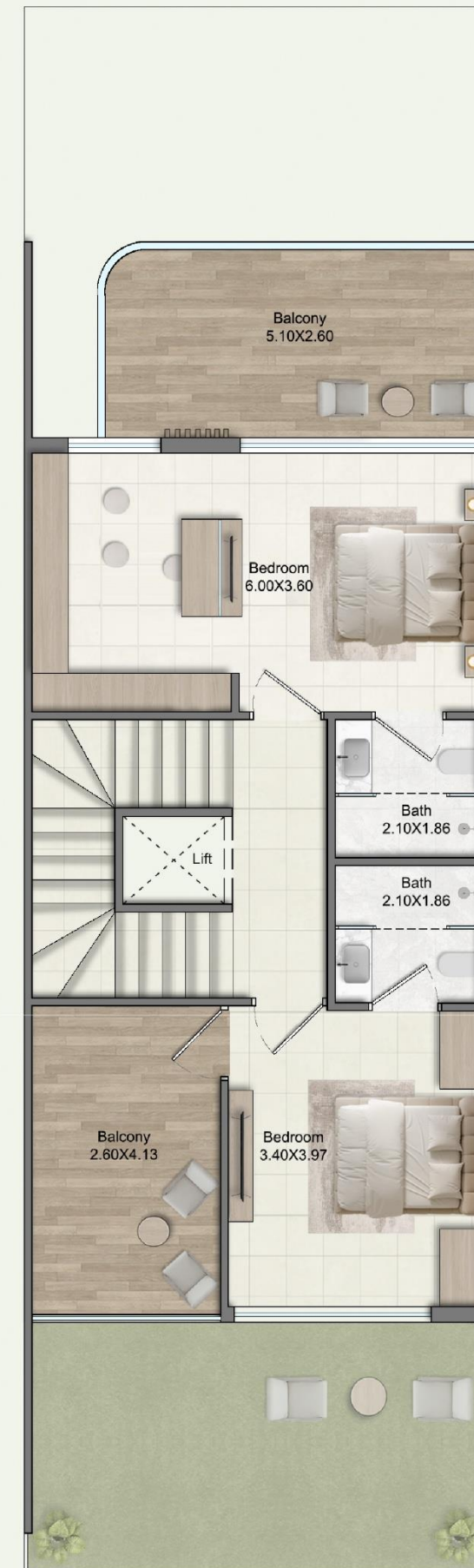


SECOND FLOOR

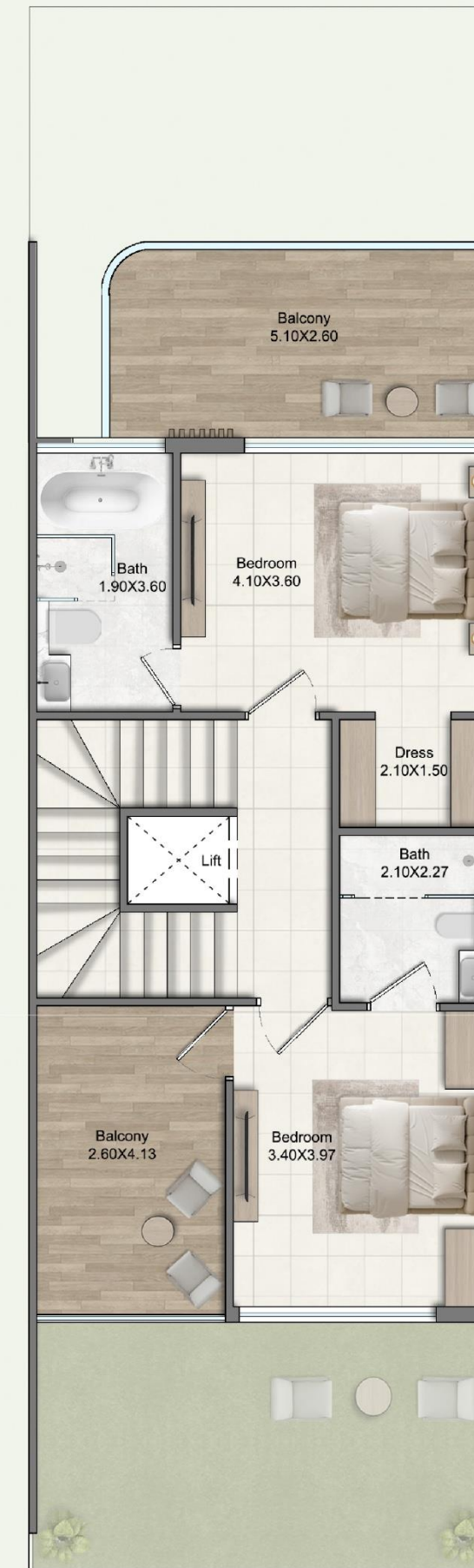
4BHK + MAID + PRIVATE ELEVATOR TOWNHOUSE (PREMIUM)



GROUND FLOOR



FIRST FLOOR

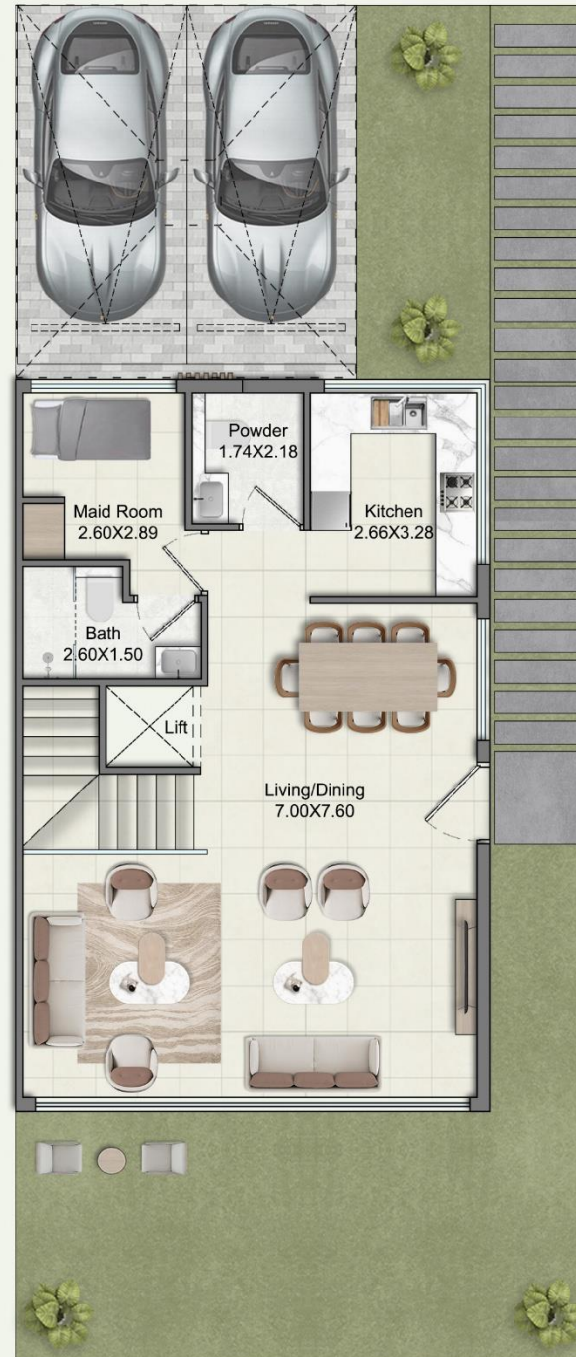


SECOND FLOOR

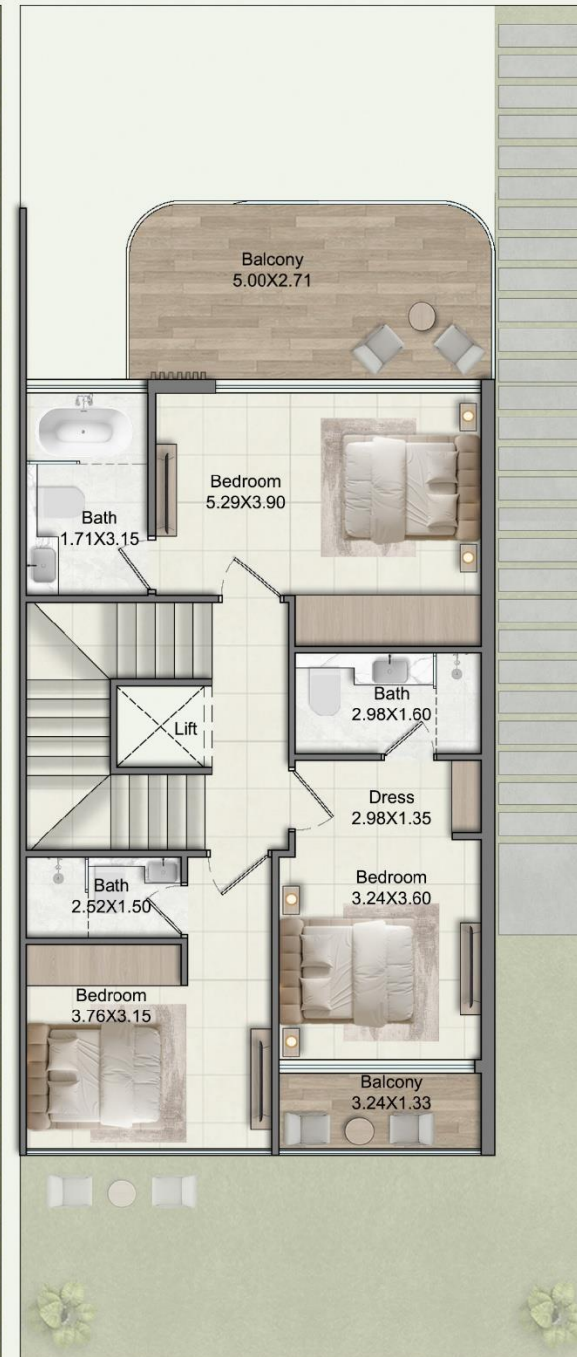


ROOF FLOOR

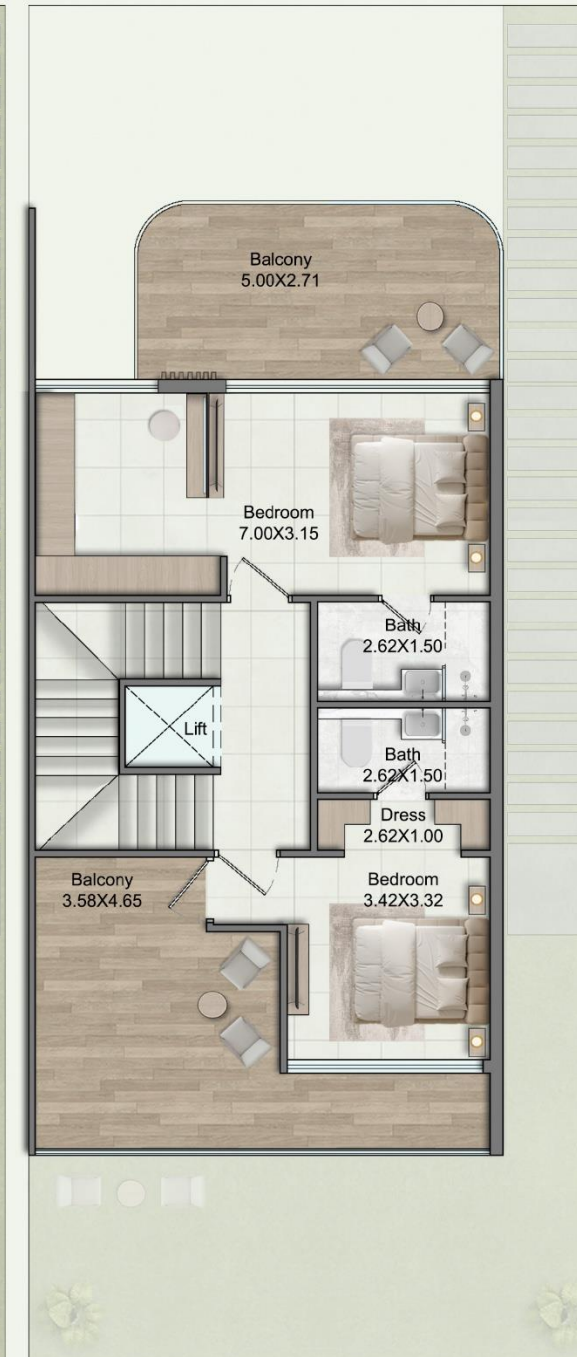
5BHK + MAID + PRIVATE ELEVATOR SEMI DETACHED VILLA



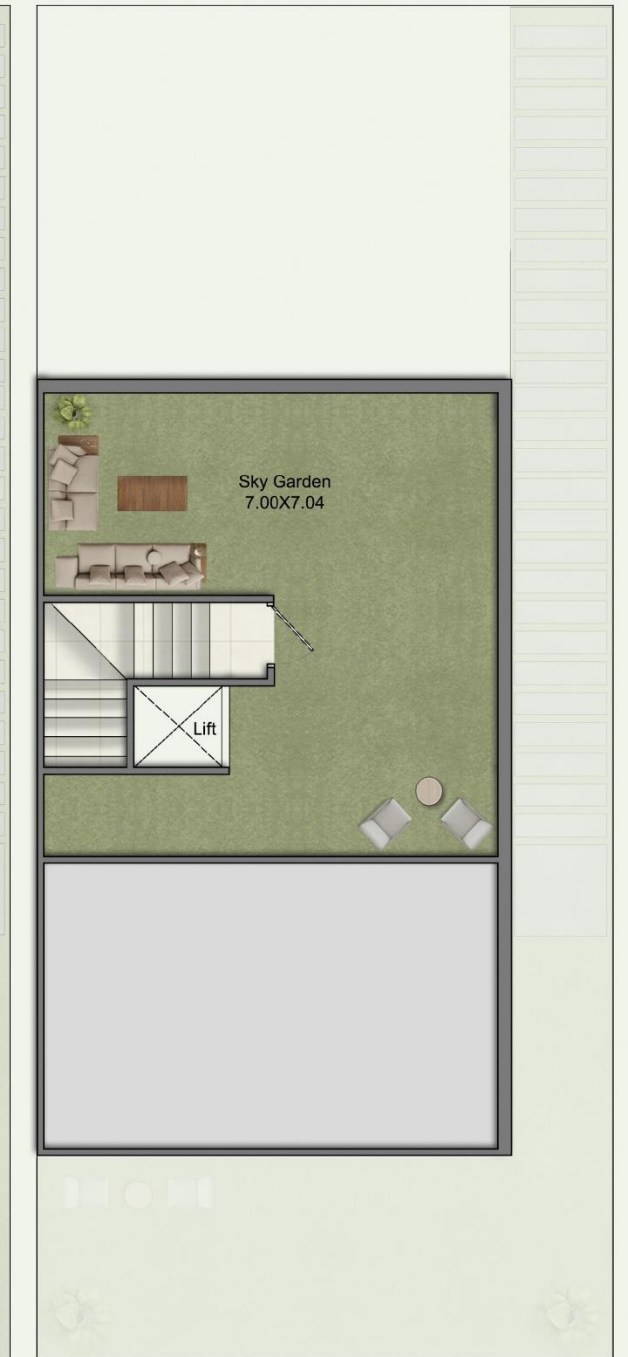
GROUND FLOOR



FIRST FLOOR

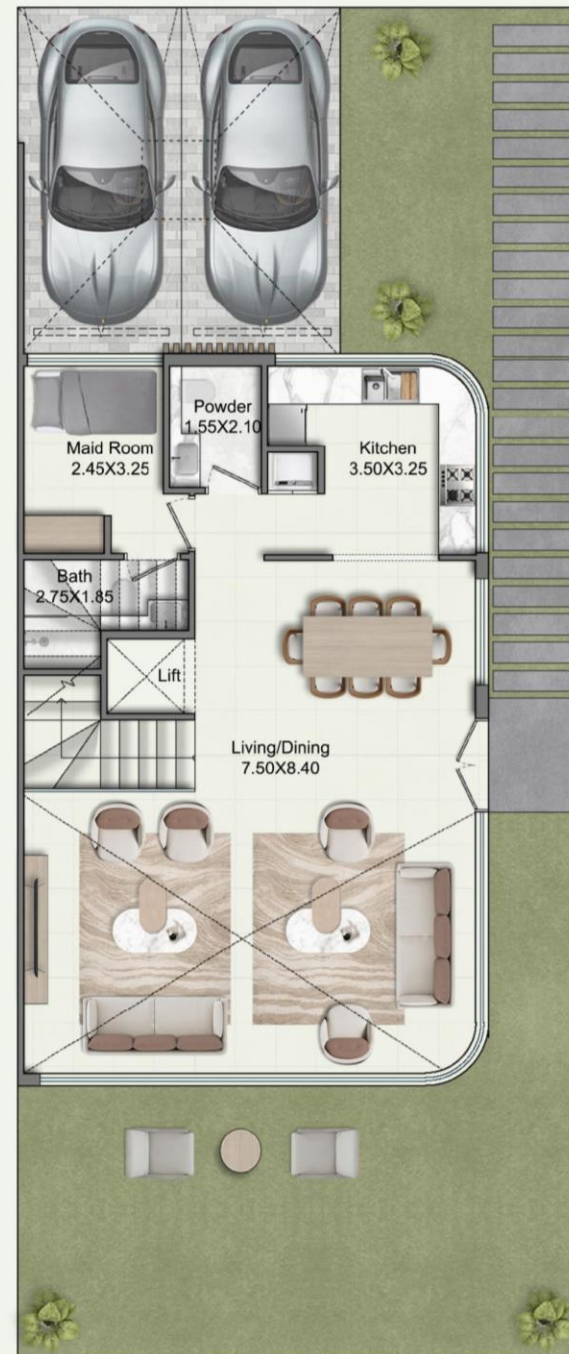


SECOND FLOOR

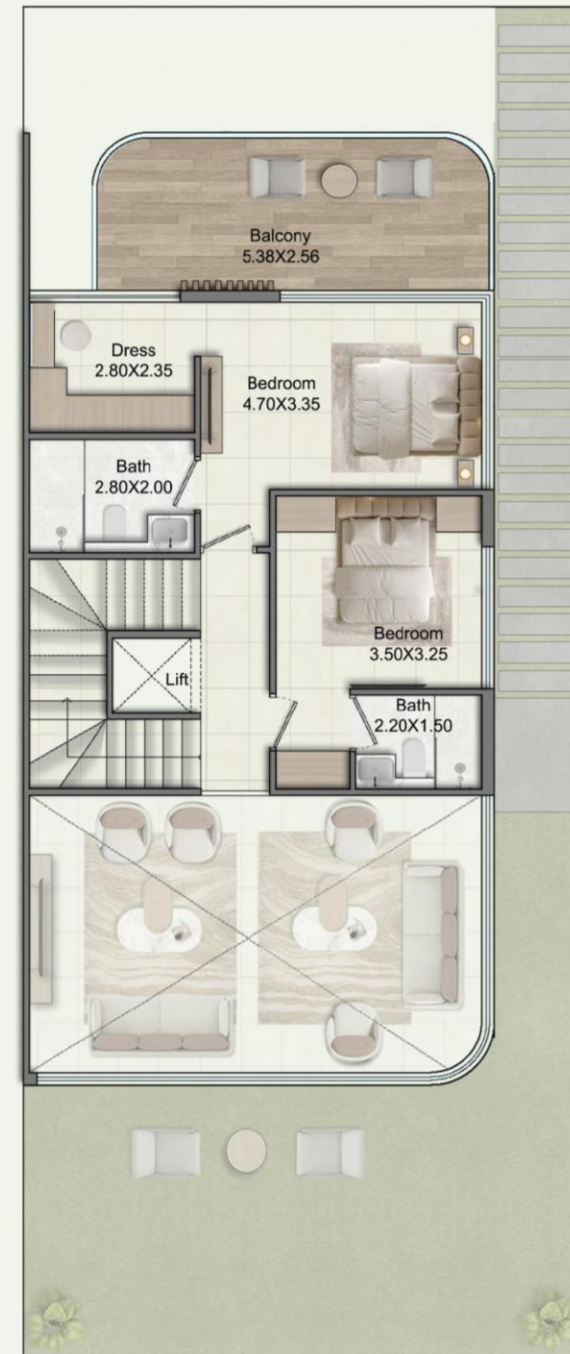


ROOF FLOOR

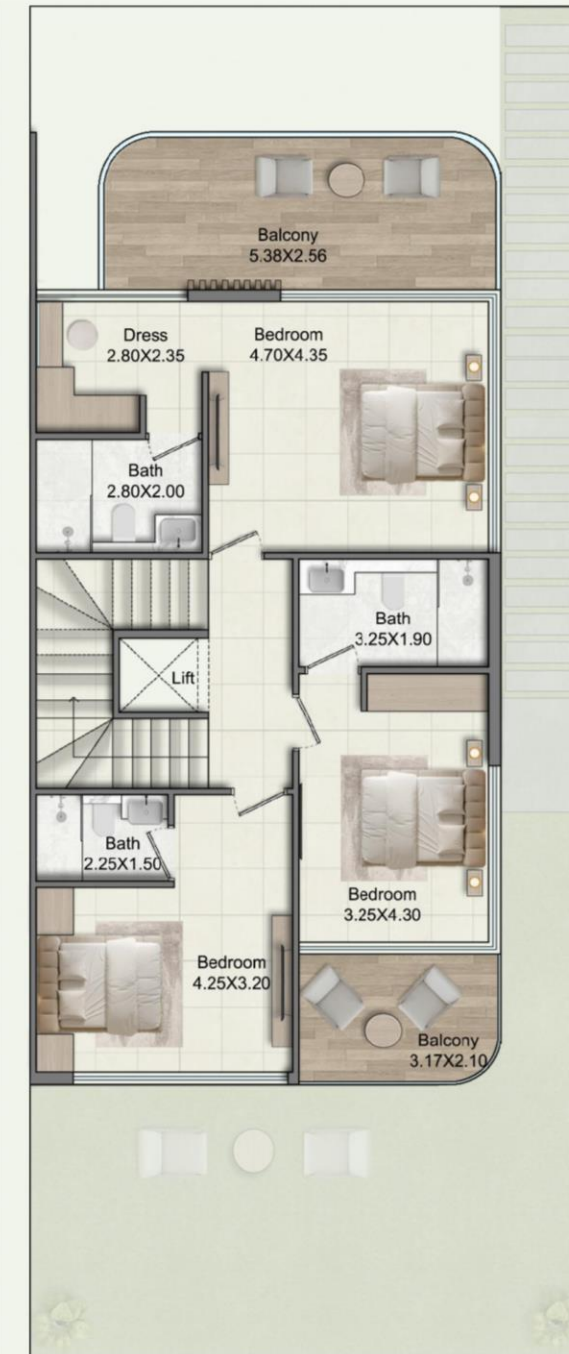
**5BHK +
MAID SIGNATURE
TWIN VILLA
+ PRIVATE ELEVATOR
WITH DOUBLE HEIGHT**



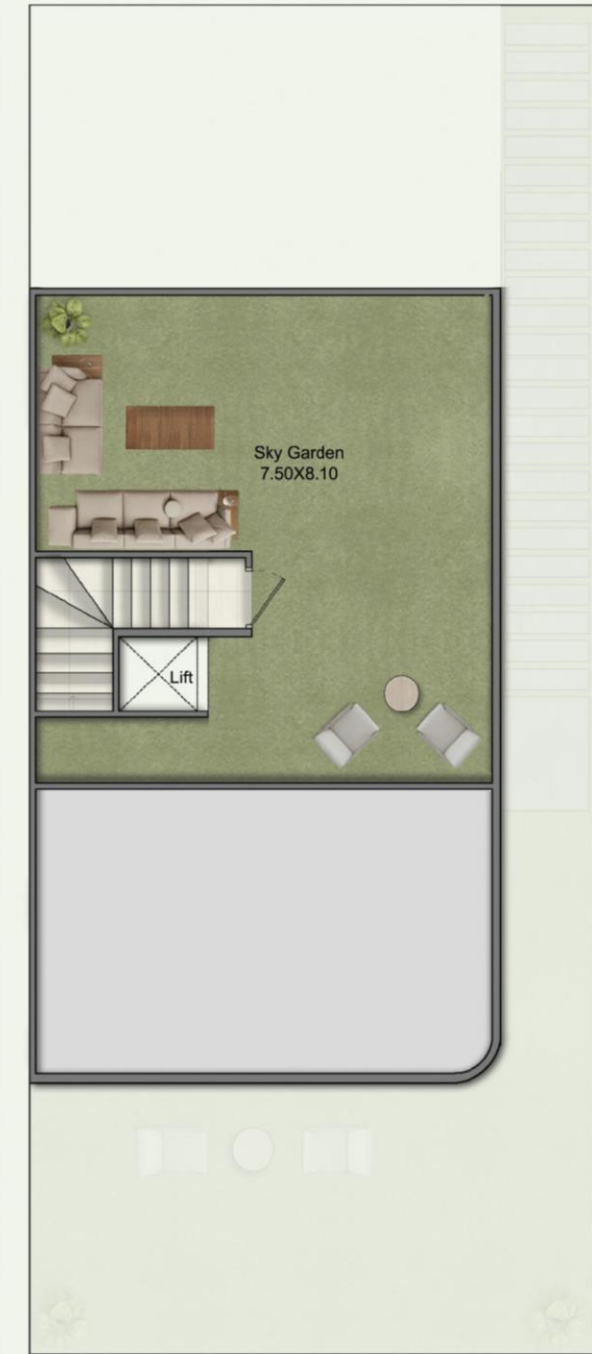
GROUND FLOOR



FIRST FLOOR



SECOND FLOOR



ROOF FLOOR

SUBMIT YOUR EOI TODAY

3 BHK + MAID
TOWNHOUSE

150K (EOI)

4 BHK + MAID
TOWNHOUSE

200K (EOI)

5 BHK + MAID
SEMI-DETACHED VILLA

250K (EOI)

5 BHK + MAID
TWINVILLA

300K (EOI)

PAY 10% & GET PRIORITY ALLOCATION OF UNITS

DISCOUNT

20% UPFRONT - 2%

30% UPFRONT - 3%

50% UPFRONT - 6%

100% UPFRONT - 10%

COMMISSION

5% BASE COMMISSION

6% 30M*

7% 50M*



*SALES TARGET FOR
GREENZ BY APRIL END

THANK YOU